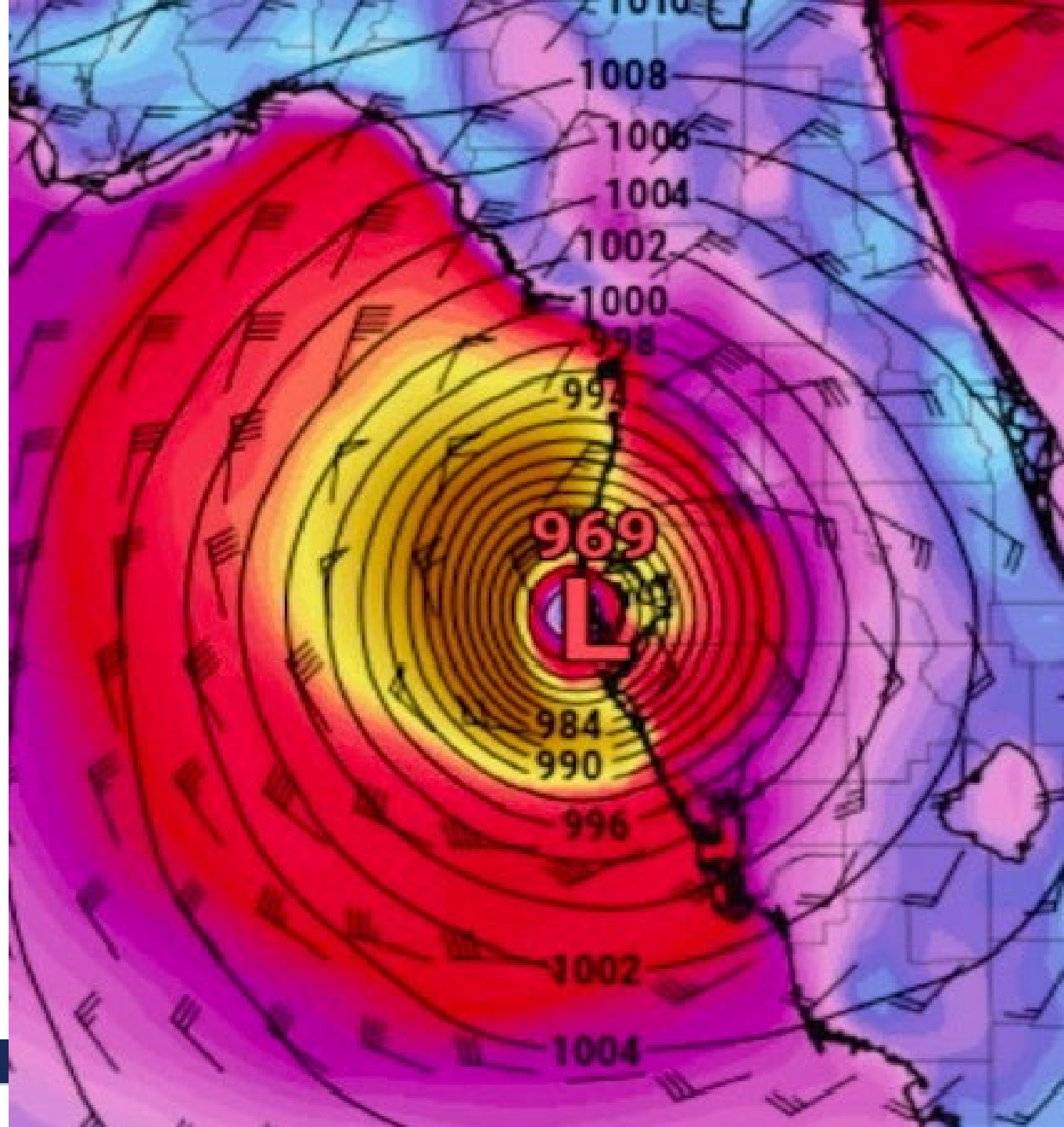


Florida Housing Coalition Hurricane and Climate Resilience Member Update Webinar

September 29, 2023
Sponsored by Fannie Mae



TODAY'S AGENDA

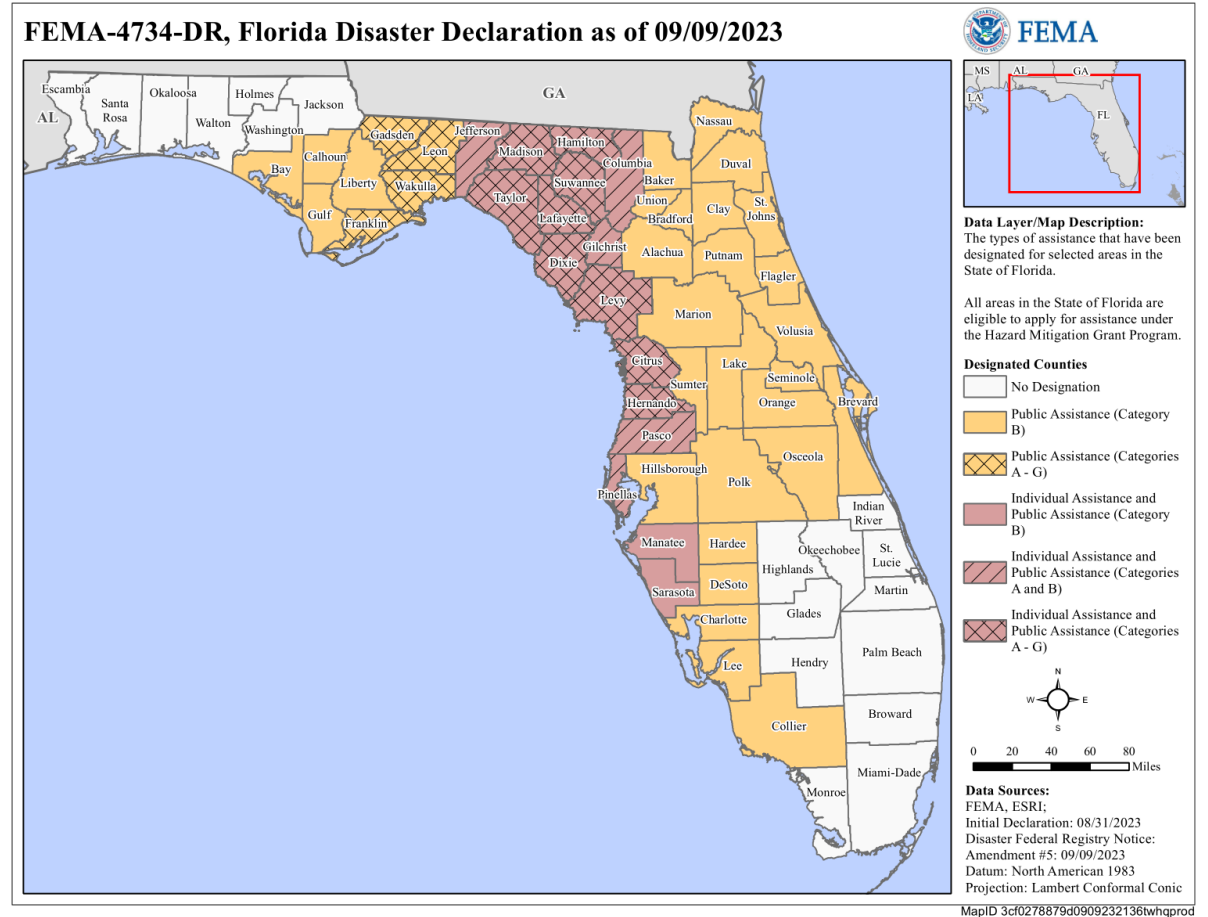
- Welcome – Please put name and org in chat
- Hurricane Idalia Update
 - CJ Reynolds, Director of Resilience and Disaster Recovery, Florida Housing Coalition
 - Diana Rothe-Smith, Individual Assistance and Disaster Housing Division, Innovative Emergency Management, Inc.
- Upcoming Webinars



Hurricane Idalia DR-4734 Declared Counties

- Lafayette
- Levy
- Madison
- Pasco
- Pinellas
- Suwannee
- Taylor
- Citrus
- Columbia
- Dixie
- Gilchrist
- Hamilton
- Hernando
- Jefferson
- Manatee
- Sarasota

<https://www.fema.gov/disaster/4734/designated-areas#individual-assistance>



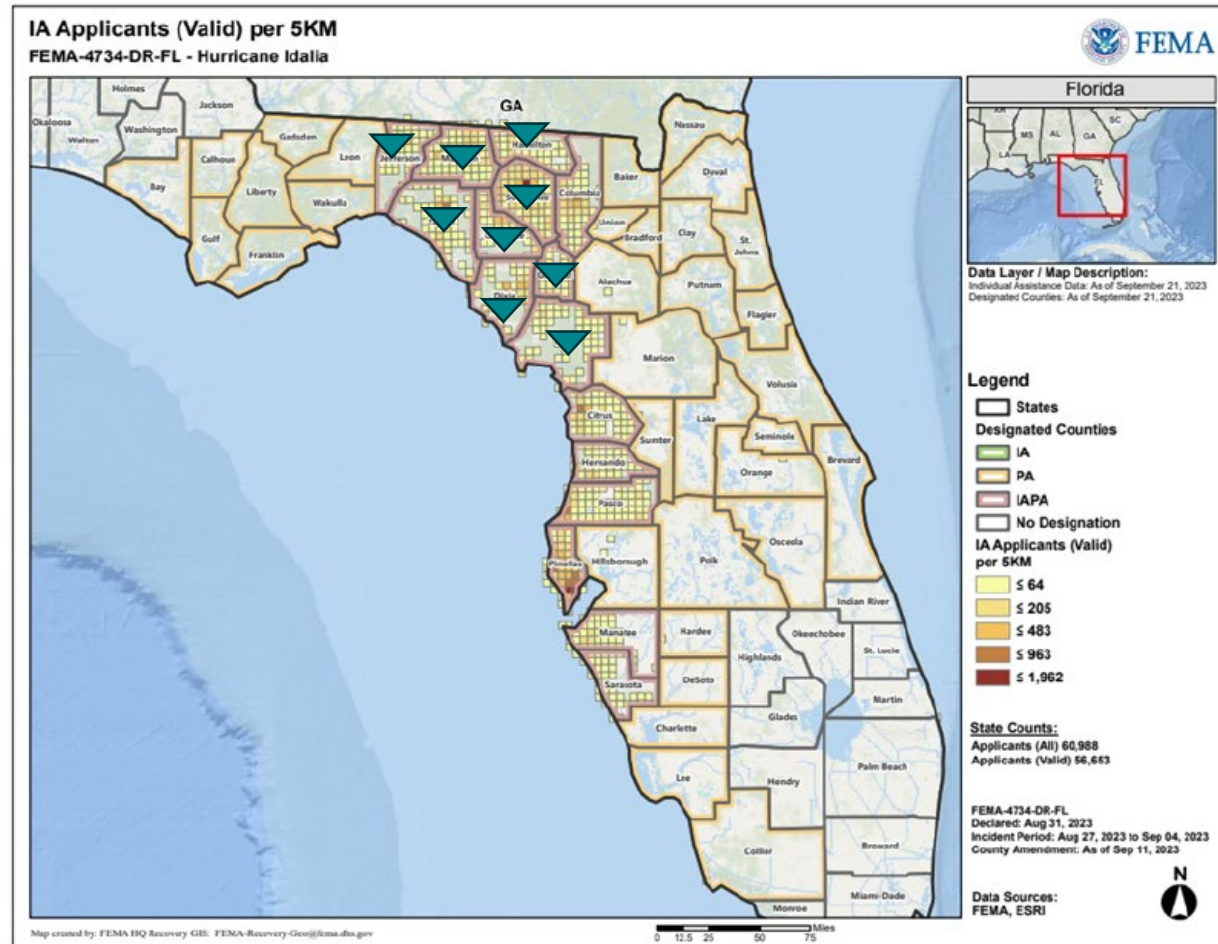
Fannie Mae®

THE FLORIDA HOUSING COALITION



FEMA Direct Housing: 9 Approved Counties

- Dixie
- Gilchrist
- Hamilton
- Jefferson
- Lafayette
- Levy
- Madison
- Suwannee
- Taylor



Fannie Mae®

THE FLORIDA HOUSING COALITION



DR-4734 DRC Locations

Open DRCs

DRC #1 **Dixie** - Dixie County Public Library, 16328 SE US-19
DRC #2 **Lafayette** - Mayo Community Center, 150 NW Community Circle
DRC #3 **Hamilton** - Courthouse Annex/Chamber of Congress, 1153 NW US Hwy 41
DRC #4 **Madison** - Career Source North Florida, 705 E Base Street
DRC #5 **Levy** - Inglis Community Center, 137 W Hwy 40
DRC #6 **Suwannee** - Exhibition 2 Building (Colosseum), 1302 SW 11th Street
DRC #7 **Taylor** – **CLOSED, Possible replacement TBD**
DRC #8 **Taylor** - Steinhatchee Community Center, 1013 Riverside S. Drive
DRC #9 **Citrus** - West Citrus Community Center, 8940 W Veterans Drive
DRC #10 **Jefferson** - Jefferson County Library, 375 S Water Street
DRC #11 **Columbia** - 180 E Duval Street
DRC #12 **Levy** - Cedar Key Fire Station, 489 1st Street **SHUTS DOWN TOMORROW 9/30**
DRC #14 **Pinellas** - Palm Harbor CS, 1500 16th Street
DRC #15 **Pinellas** - Enoch Davis Center, 1111 18th Avenue South
DRC #16 **Hernando** - Hernando Public Library-Spring Hill Branch, 9220 Spring Hill Drive
DRC #18 **Pasco** - Fasano Regional Hurricane Shelter, 11611 Denton Avenue

Mobile DRCs

Mobile DRC #1A **Dixie** - Suwanee Baptist Church, 23103 SE Hwy **Open 9/26-9/29 CLOSING TODAY**
Mobile DRC #1B **Dixie** - Jena Pentecostal Holiness Church, 5335 Co Rd 358 **Open 9/29-10/1**
Mobile DRC #1C **Dixie** - Butler Douglas Memorial Park, 244 8th Ave W **Open 9/21-9/24**
Mobile DRC #2C **Sarasota** - North Port Library, 13800 Tamiami Trail **Open 9/28-9/30**
Mobile DRC #2D **Sarasota** - Mobile DRC #2D Sarasota- Sarasota Public Beach Parking- 948 Beach Road, **Open 10/2-10/5**
Mobile DRC #3A **Manatee** - Rubonia Community Center, 1309 72nd Street E **Now open for at least 2 weeks**
Mobile DRC #4A **Gilchrist**- County Fire Station #2- **Opening dates TBA**
Mobile DRC #4B **Gilchrist**- County Fire Station #4- **Opening dates TBA**

DRC Locator

- **Link:** [Disaster Recovery Center \(DRC\) Locator](#)



Fannie Mae®

THE FLORIDA HOUSING COALITION

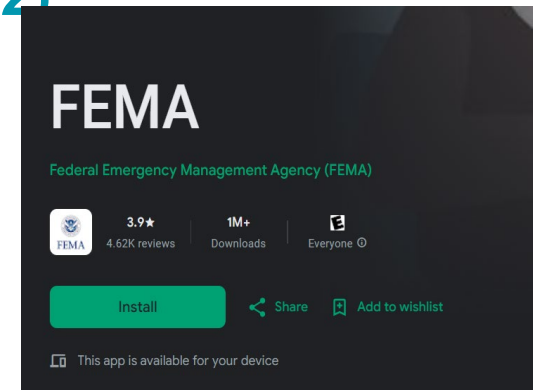


Idalia FEMA IA Registration Outreach

FEMA deadline for registration is October 30.

Please support local outreach

- Encourage people to register for assistance **1-800-621-FEMA (3362)**
 - *Critical Needs Assistance*
 - *Clean/Sanitize Home Assistance*
 - *Keep their phone number and location current with FEMA*
- [Log on to www.disasterassistance.gov](http://www.disasterassistance.gov)
- Encourage people to download the FEMA App for Smartphones



Fannie Mae®

THE FLORIDA HOUSING COALITION





Diana Rothe-Smith

Individual Assistance and Disaster
Housing Division

Innovative Emergency Management, Inc.



Fannie Mae®

THE FLORIDA HOUSING COALITION





Coordinating Between Housing Organizations and Emergency Management

Diana Rothe-Smith
Individual Assistance and Disaster Housing Division
Innovative Emergency Management, Inc.

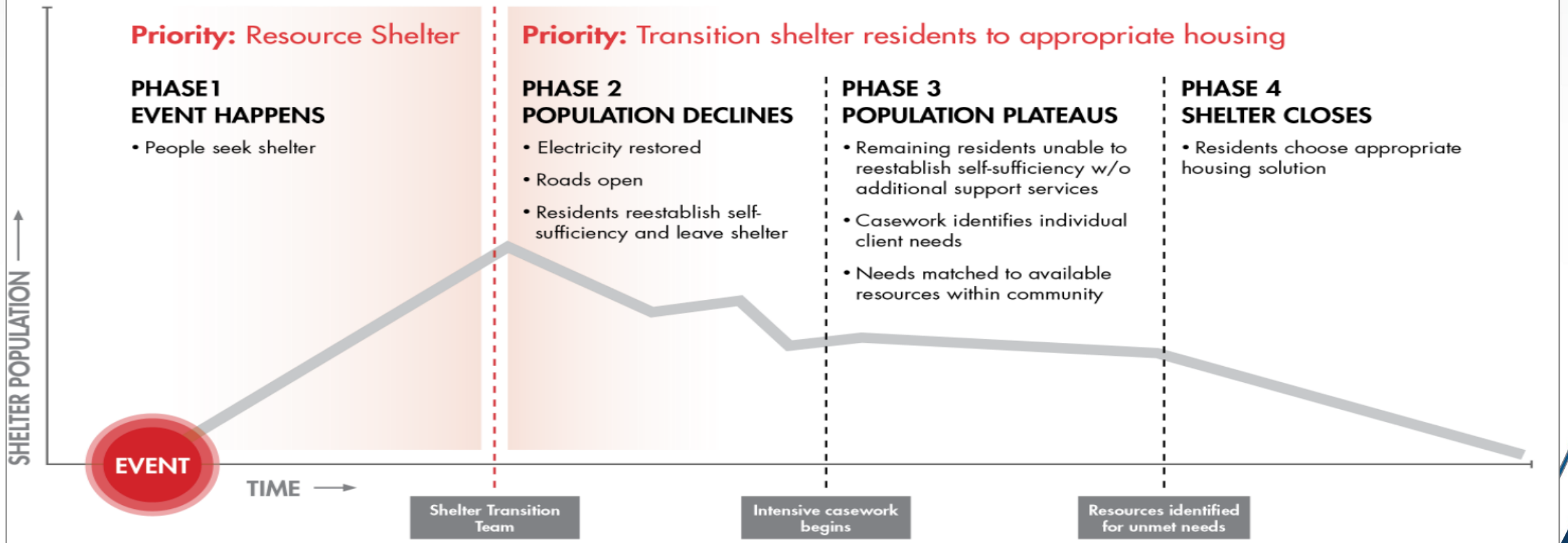


Agenda

- The Survivor's Journey: What Happens When?
 - Response: First 4 Days
 - Relief: 40 Days Later
 - Recovery: 400 Days or more
- Who Does What?
 - Local emergency management
 - State government
 - Federal resources
 - VOAD member organizations
 - Local Social Services and Housing Organizations
- How and where to Connect?
 - Integrating disaster programs and resources with ongoing services

Let's start from the beginning... (Days 4- 40)

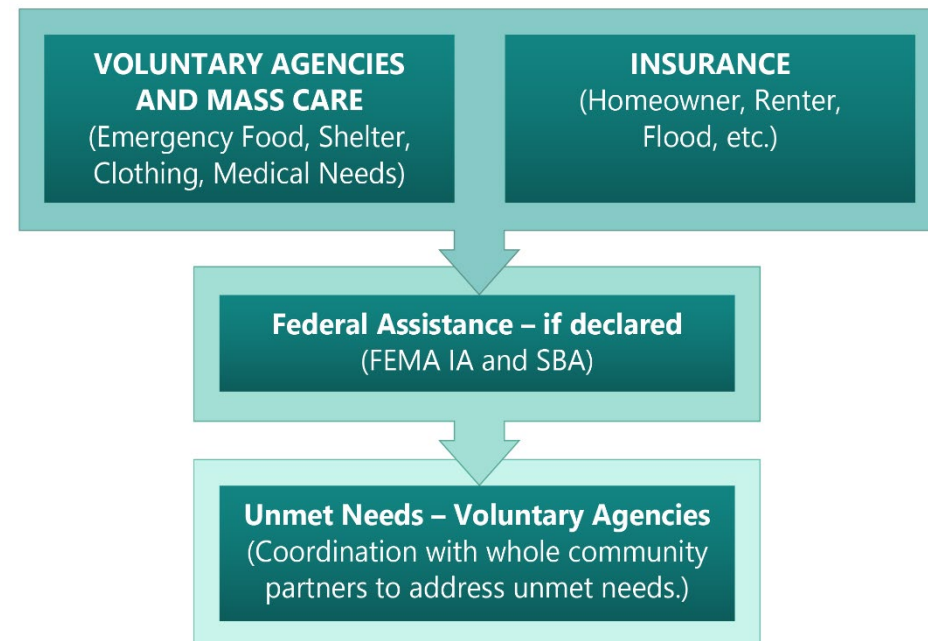
Phases of Shelter Operations



Source: National Mass Care Strategy

Sequence of Delivery

- It starts and ends with voluntary agencies/ nonprofits
- Social Services- stabilize
- Insurance
- FEMA and SBA
 - Housing & ONA
- Nonprofits - UNMET NEEDS

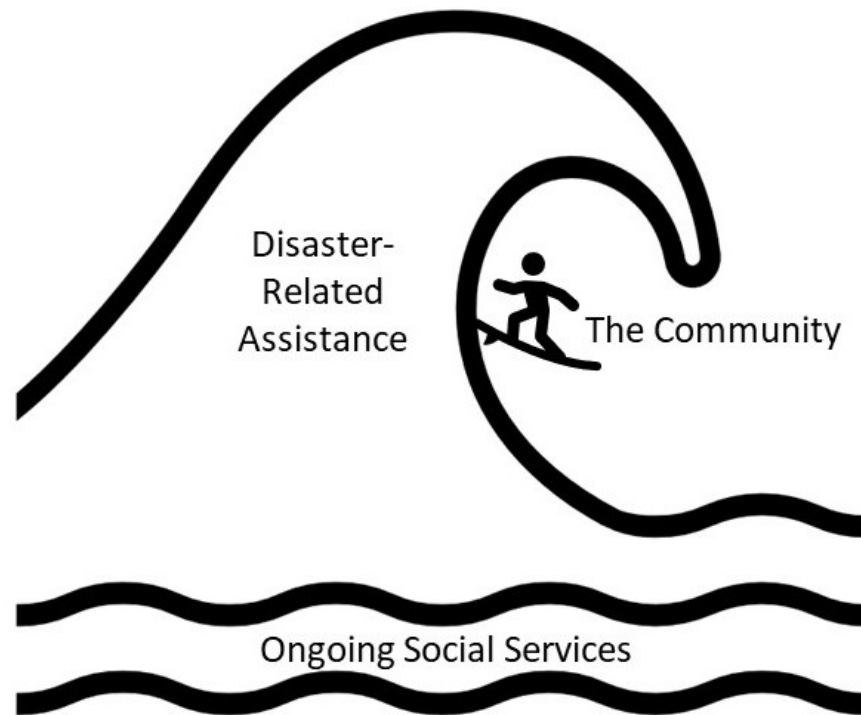


FEMA Individual Assistance Programs by Disaster Type

Individual Assistance Program	Emergency Declaration	Major Disaster Declaration
Mass Care/Emergency Services	X	X
Individuals and Households Program (IHP)	X	X
Disaster Case Management (DCM)		X
Crisis Counseling Program (CCP)		X
Disaster Legal Services (DLS)		X
Disaster Unemployment Assistance (DUA)		X
Voluntary Agency Coordination (VOAD)	X	X

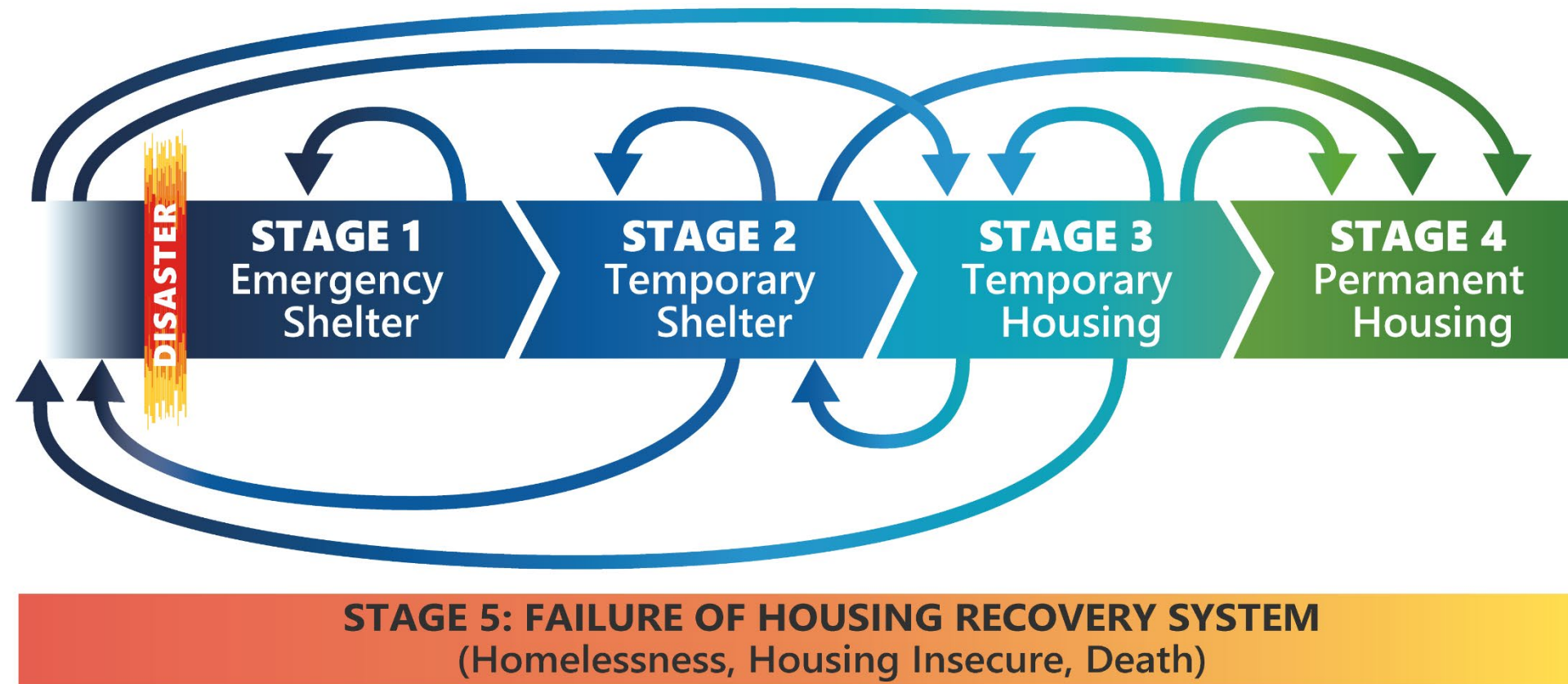
After the Disaster- The Wave

Resources flood in and you will need to know the moving parts



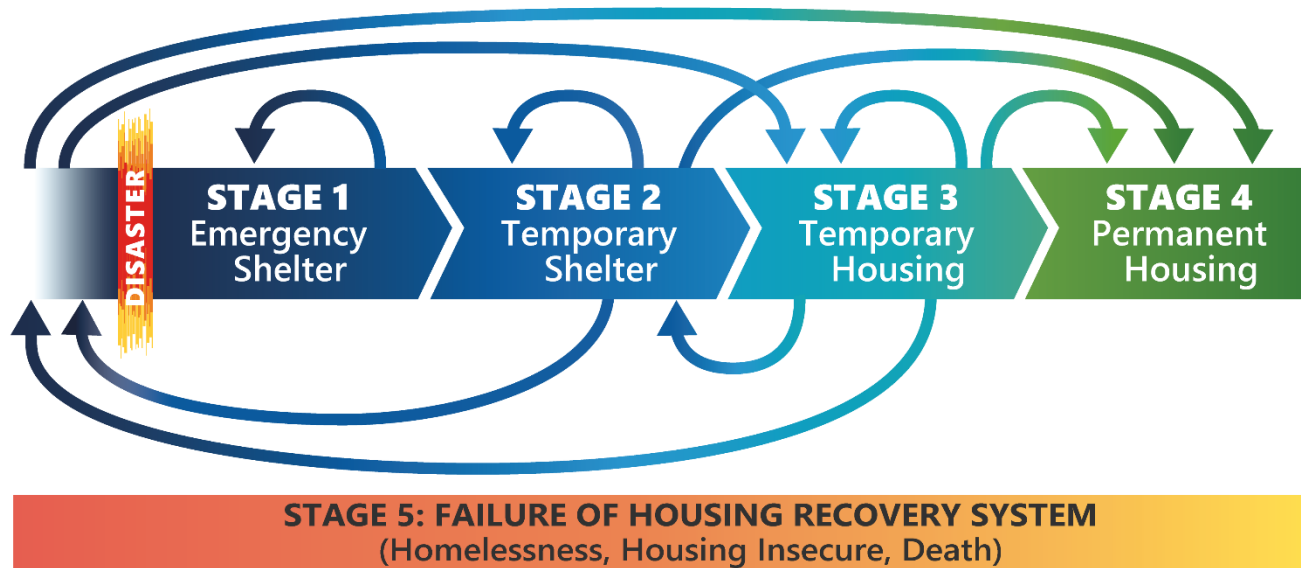
- VOAD member organizations
- State Resources
- Federal Programs
- Case Working the needs
- Long Term Recovery Groups and Disaster Case Management for more profound needs
- Unmet Needs and continued resource management for the new normal

Housing Recovery: A Survivor's Journey



Adapted from Sutley, E.J., and Hamideh, S. (2020). *Postdisaster Housing Stages: A Markov Chain Approach to Model Sequences and Duration Based on Social Vulnerability*. Risk Analysis, 40(12), pp. 2675-2695

Housing Transitions Have Barriers



Adapted from Sutley, E.J., and Hamideh, S. (2020). *Postdisaster Housing Stages: A Markov Chain Approach to Model Sequences and Duration Based on Social Vulnerability*. *Risk Analysis*, 40(12), pp. 2675-2695

- Many moves
- Limited housing stock
- Utility connections
- Assistance gaps
- Political influences
- Disaster spotlight fades
- And more...

Permanent Housing

Survivors decide when they are in
permanent housing.

But you can help them get there.

Long-term Recovery

Federal Side

- Stabilize
- Transitional
- 18-months, short-term
- CDBG-DR, promote longer term resilience

Non-profit and Survivor Side

- Non-profits = Permanent Housing
- Survivors = “I’m home”

Long-term Recovery

Long Term Recovery Group	Community Recovery Committee
Supports Individuals and Households	Supports Community Recovery
Focuses on assisting impacted individuals with their personal recovery.	Focuses on assisting jurisdictions with planning, policy and coordination efforts to accomplish both recovery and increased resiliency.
Types of assistance provided: <ul style="list-style-type: none"> • Housing • Emotional and Spiritual Care • Mental Health Services • Financial assistance • Case Work and Case Management • Resource alignment • Volunteer Support • Donations and material distribution • Personal property debris removal • Repair and construction • Food insecurity support • Childcare • Transportation support 	Types of resources managed: <ul style="list-style-type: none"> • Community planning • Adequate, affordable housing • Stabilized economy • Health and Social Services available • Code recommendations, mitigated recovery • Restored and hardened infrastructure •
Recovery Steering Committee	
Provides high-level advocacy and support for both the Individual and Community Disaster Recovery. Serves as a link between both missions.	

Emergency Management's Role in Disaster Housing



■ Non-Disaster

- Coordinate with planning, permitting, zoning, and local officials
- Establish policies that will enable you to do your job post-disaster
 - Disaster temporary housing ordinance
 - Expediting permitting that will put survivors at the front of the line
 - Figuring out what functions may need surge staffing - plan for it

Success Factors

- Know your housing baseline
- Understand the phases of housing
 - Sheltering (emergency and temporary)
 - Temporary housing (short term, not sheltering)
 - Permanent housing (the goal state)
- What will it take to rebuild?
 - Enable your community to take control of its recovery

Enable Your Community to Take Control of Its Recovery

- Rapid and unplanned construction causes permanent community change
 - Changes character of place
 - Increases displacement of the most vulnerable
- Planning, zoning, and enhanced permitting processes are keys to success
- Housing is successful under a long-term recovery plan, not a response plan

Contact Information



Diana Rothe-Smith, Program Manager
IEM Individual Assistance and Disaster
Case Management
(202) 355-5475
Diana.RotheSmith@iem.com

Upcoming Hurricane Webinars



10/6/2023 1:30-2:30pm

Keys to Success for CDBG-DR Policies and Procedures

It can be difficult for state and local government to leverage CDBG-DR funds effectively without expert guidance on keys to success. Join the Florida Housing Coalition on Friday, October 6 from 1:30 to 2:30pm for a discussion with Giovanni Moss, the Director of Emergency Management for Indelible Consulting, on best practices for establishing CDBG-DR policy and procedure infrastructure within your organization. Mr. Moss will give guidance on long-term thinking in the challenging sphere of disaster recovery.



Fannie Mae®

THE FLORIDA HOUSING COALITION



Upcoming SHIP Webinars



10/4/2023 10:00-11:30am

Finding and Retaining Rehabilitation Contractors

Presenters will provide guidance for finding contractors for blue sky repairs as well as after a disaster.

Learn how to overcome difficulties getting an insurance estimate when starting a job. The training will also address alternatives such as using manufactured housing components.



Fannie Mae®

THE FLORIDA HOUSING COALITION



Upcoming Webinars

Surplus Land and Permanent Affordability

October 11, 10am to 11:30 am



Surplus land is a key resource for local governments in the production of workforce and affordable housing affordability. The Live Local Act provides new requirements and guidance on best practices for how local governments manage the disposition of land, including encouraging the utilization of land (99-yr) leases as well as new property tax exemptions for land owned by nonprofits. This webinar introduces philosophy and mechanics of shared equity programs such as community land trusts, including the difference between subsidy recapture and subsidy retention, how incorporating shared equity provisions into land disposition and SHIP strategies can effectively grow and preserve the affordable housing stock in any community.



Fannie Mae®

THE FLORIDA HOUSING COALITION



Webinar Coming Soon!



Early November

Coordinating Effective Housing Recovery: Implementing FEMA Information Sharing Requests

This special webinar will feature experts on data sharing, housing assistance, and recovery strategies from FEMA, FDEM, and FHC to help local governments and nonprofits develop the necessary documents.

Tips include preparing your ISAA requests, aligning FEMA datasets with targeted housing services, and preparing your lists of contractors, providers, and partners.



Fannie Mae®

THE FLORIDA HOUSING COALITION



Technical Assistance is Available

Daily Assistance:
1 (800) 677-4548

Options for Further Assistance Include:

Phone and Email consultation
Site Visits

**Register at www.flhousing.org for:
Webinars and Other Events**

And Now...

The Posting of the PowerPoint!

PowerPoint is available in Chat



Fannie Mae®

THE FLORIDA HOUSING COALITION



Thank you!



CJ Reynolds

Director of Resilience
and Disaster Recovery
reynolds@flhousing.org



Lauren Thornberg

Technical Advisor
thornberg@flhousing.org



Fannie Mae®

THE FLORIDA HOUSING COALITION

