A satellite image of a hurricane over the Gulf of Mexico. The hurricane's eye is a dark purple circle in the center, surrounded by a red ring, then green, and finally blue at the outer edges. The Gulf of Mexico is visible to the left, and the eastern coast of North America is to the right. The text is overlaid on the bottom left of the image.

# Florida Housing Coalition Hurricane Member Update Webinar

September 16, 2022  
Sponsored by Fannie Mae

# AGENDA

- Announcements
- Crisis Track Emergency Management Software



Fannie Mae®

THE FLORIDA HOUSING COALITION



# The Rehabilitation/ Emergency Repair Process

Part 1 on September 20 at  
2:00 pm

Registration:

<https://attendee.gotowebinar.com/register/9098685643867051275>

Part 2 on September 22 at  
2:00 pm

Registration:

<https://attendee.gotowebinar.com/register/118495892262469900>



Fannie Mae®

T





# HOME Funding for Affordable Housing Part 1

September 27 at 10 am

<https://attendee.gotowebinar.com/register/9127591804561432845>



Fannie Mae®

THE FLORIDA HOUSING COALITION





# Affordable Housing Law



October 4 at 2:00 pm

<https://attendee.gotowebinar.com/register/4396256930799749646>



Fannie Mae®

THE FLORIDA HOUSING COALITION



# WORKSHOP: The Credit Underwriting Process for Affordable Housing



November 3 from 9:00 am to 5:00 pm  
LOCATION: Hilton Tampa Westshore

<https://fhc.wildapricot.org/event-4917205>



Fannie Mae®

THE FLORIDA HOUSING COALITION



# And Now...

## The Posting of the PowerPoint

- PowerPoint is available in Chat



# Crisis Track Emergency Management Software



Marla Biles  
Director, Business Development  
[marla.biles@juvare.com](mailto:marla.biles@juvare.com)



Marla Biles  
Director, Business Development



# **A Modern Approach to Disaster Management**

9.15.2022 Florida Housing Coalition

1

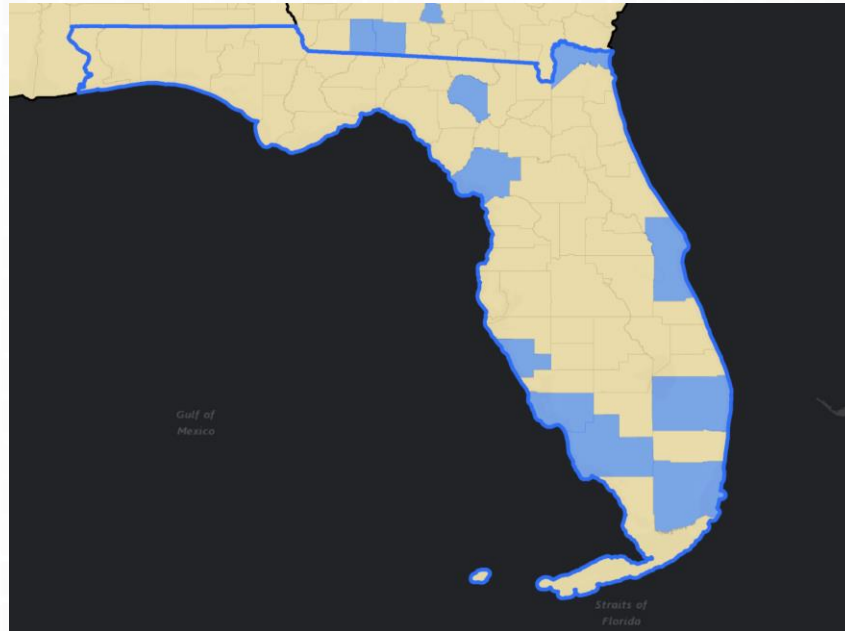
# FLORIDA CRISIS TRACK CUSTOMERS

## Large Counties

- Brevard County
- Collier County
- Manatee County
- Sarasota County

## Smaller Counties

- Bradford County
- Dixie County
- Levy County
- Nassau County
- Suwannee County



## Cities

- Cape Coral
- Fort Myers
- Hialeah
- Miami
- Miami Beach
- West Palm

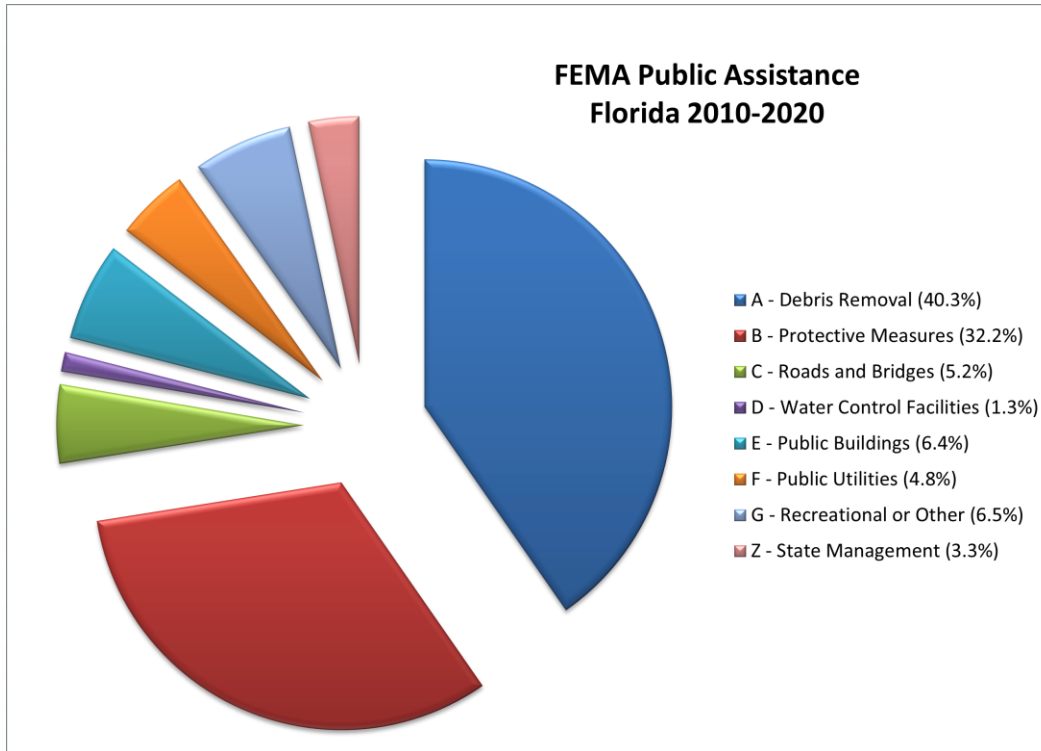
# LOCAL ISSUES WITH DISASTER MANAGEMENT PROCESS

- Great inefficiencies
- Length of time
- FEMA updates
- Meet local needs

The image displays a stack of FEMA Form 90-01, Pre-Disaster Survey forms. The top form is the most prominent, showing the header 'U.S. DEPARTMENT OF HOUSING AND SECURITY' and 'FEDERAL EMERGENCY MANAGEMENT AGENCY'. It includes a section for 'PUBLIC REPORTING INSTRUCTIONS' and a 'DISASTER INFORMATION' section with fields for 'DISASTER', 'PROJECT NO.', 'PA ID NO.', 'DATE', and 'CATEGORY'. Below this is a 'SCOPE OF WORK' section with a large text area for 'DAMAGE DESCRIPTION AND DIMENSIONS'. The form also includes a table for 'ITEM CODE', 'NARRATIVE', 'QUANTITY/UNIT', 'UNIT PRICE', and 'COST'. The bottom of the form has fields for 'PREPARED BY', 'TITLE', 'SIGNATURE', and 'DATE'. The form is dated October 11, 2008, and is labeled 'FEMA Form 90-01, FEB 08'.



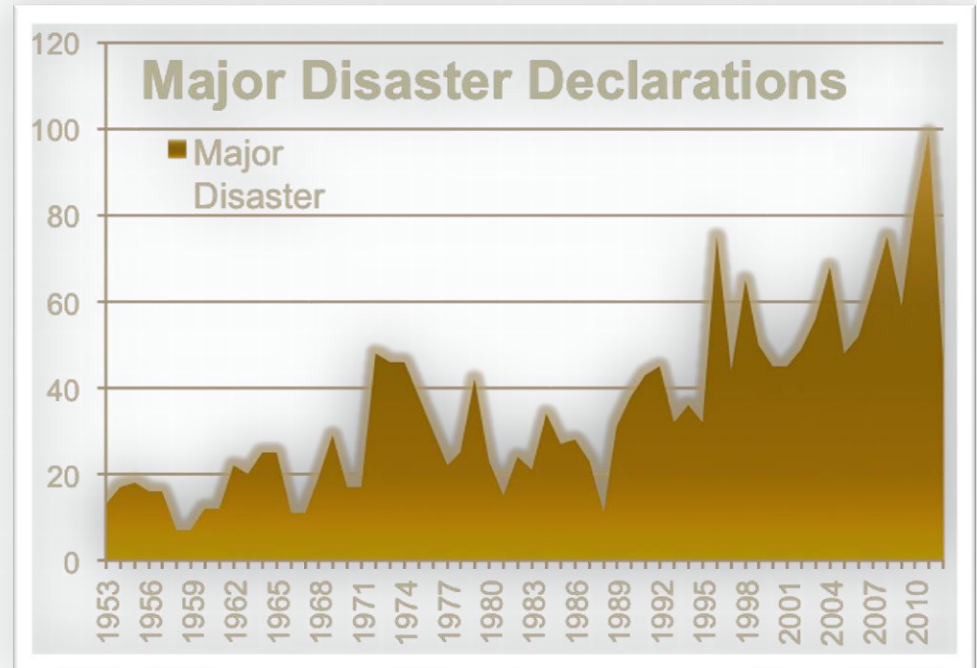
# PUBLIC ASSISTANCE EXPENSE TRACKING



■ *Emergency Measures 73%*

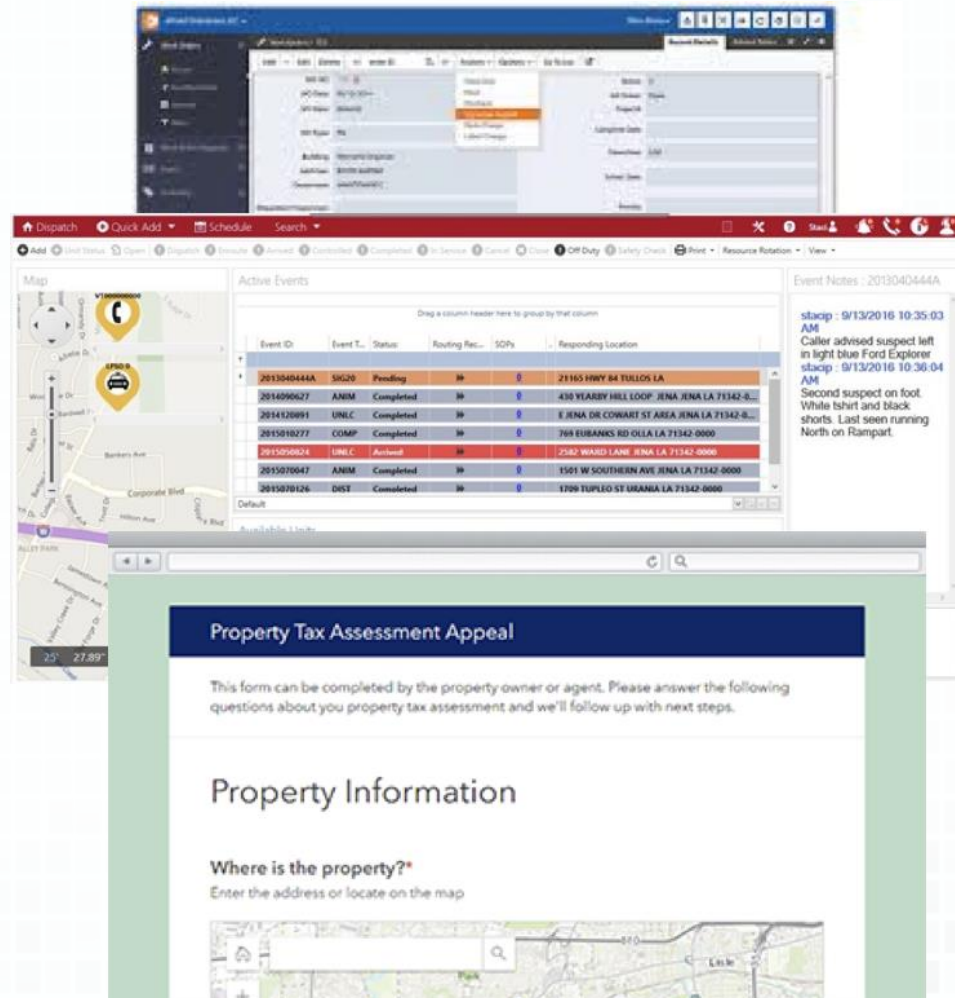
## INCREASE IN DOCUMENTATION

- Increase in detail
- More photos
- Faster reporting



# LOCAL DATA IN OTHER SYSTEMS

- Tax Assessment - GIS
- Code enforcement
- Roads/Public Works Work Order Management
- Finance - Employees/Assets
- E911 - Address Points



# LEVERGING EXISTING TECHNOLOGY ASSESTS

- Tax Assessment - GIS
- Code enforcement
- Roads/Public Works Work Order Management
- Finance - Employees/Assets
- E911 - Address Points



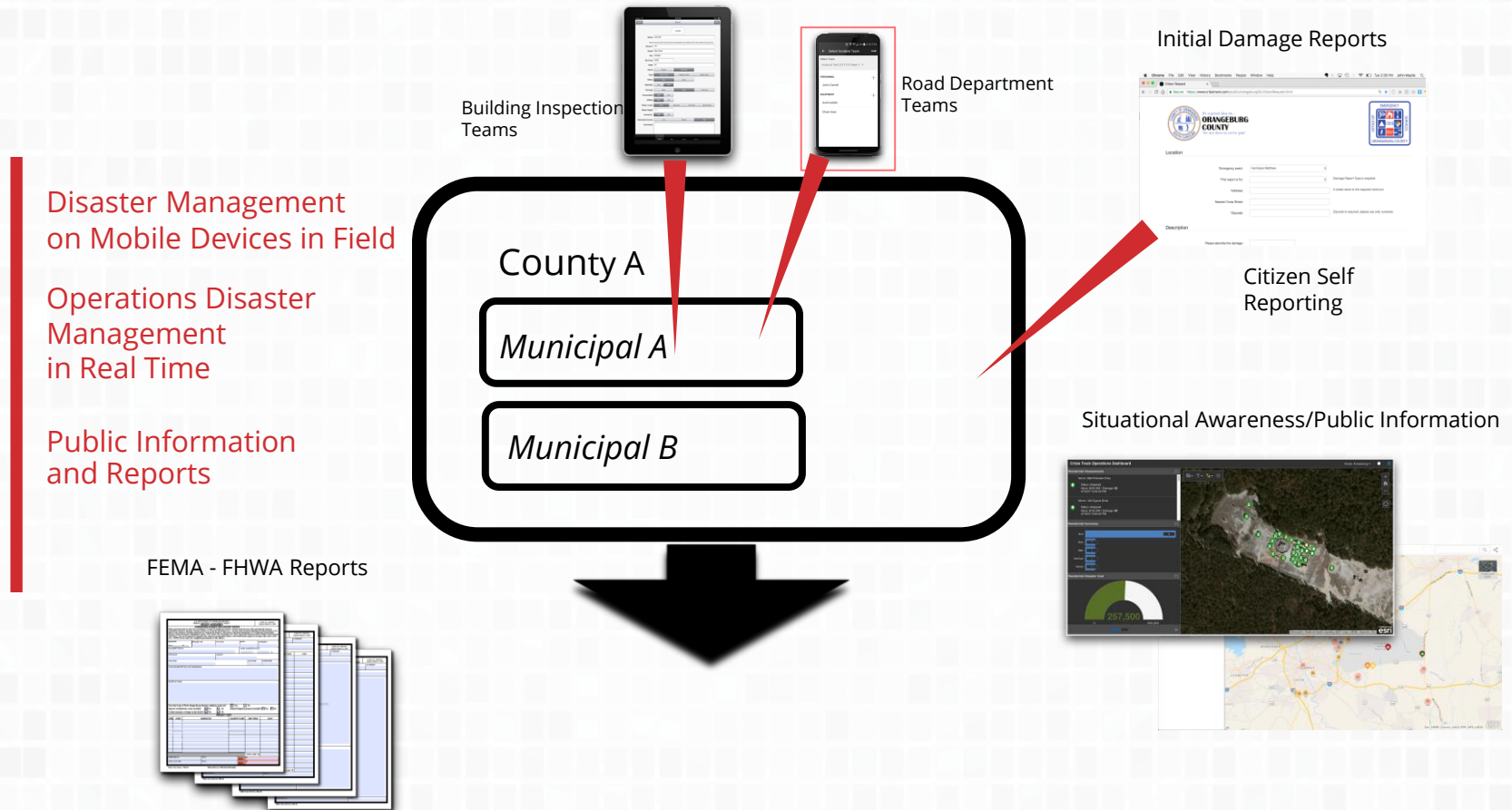


# LOCAL DISASTER MANAGEMENT SOFTWARE

- Reduce collection effort for federal and local needs
- Increase accuracy
- Get data to the State OEM



# CRISIS TRACK WORKFLOW



# CRISIS TRACK PRODUCT TIERS

Features	Damage Assessment	Disaster Management	All-Hazards Emergency Management
Damage Assessment Cost Calculations	X	X	X
Road Closure Tracking	X	X	X
Initial Damage Reporting	X	X	X
Real-Time Location Tracking	X	X	X
GIS/Tax Data Integration	X	X	X
FEMA Damage Assessment Form Outputs	X	X	X
Force Labor and Equipment Time Tracking		X	X
Debris Monitoring		X	X
Emergency Management Task Tracking		X	X
FEMA Public Assistance Grant Reporting		X	X
Resident Self Reporting		X	X
Intra-Jurisdiction Access and Views		X	X
Third-Party Interfaces		X	X
Incident Resource Tracking and Management			X
Situation Mapping and Reporting			X
Incident Action Plan Documentation			X
Contingency and Event Preplanning			X
Specialized Workflows: SAR Operations, Evacuations and Reentry Management, Sheltering, HAZMAT Spill Response			X

# CRISIS TRACK LICENSING

- BASED ON JURISDICTIONS POPULATION
- **UNLIMITED** USERS WITHIN JURISDICTIONS AGENCY
- ENTERPRISE LICENSE
- INCLUDES 1 DAY OF WEBCAST TRAINING AT *(no cost)*
- INCLUDES SET UP AT *(no cost)*
- ANNUAL DATA UPDATES *(no cost)*
- TECHNICAL SUPPORT *(no cost)*



## **CRISIS TRACK ADVANTAGES**

- Easy to use: 10 minutes of training
- Use local data to pre-fill FEMA forms for Recovery Dollars
- Track issues for local processes: road closures, building permitting
- Include other applicants such as municipalities and local authorities
- Streamline force labor and equipment tracking
- Share data: Web EOC and Esri integration

# IMPLEMENTATION

- Resource Management
- Force Labor Lists
- Equipment Inventories
- Infrastructure Inventory
- Address Points and Parcels
- Bridge and Culvert Inventory
- Disaster Management Planning
- Setup Initial Users
- Implement Citizen Reporting Website
- Conduct Onsite Training

# OPERATIONS AND MAINTENANCE

- Annual data refresh
- Automatic updates (no cost)
- System monitoring
- Technical support (no cost)





## QUESTIONS?

MARLA BILES | DIRECTOR, BUSINESS DEVELOPMENT

M: [912-777-9775](tel:912-777-9775)

E: [marla.biles@juvare.com](mailto:marla.biles@juvare.com)



# CRISIS TRACK: Beyond Survey 123

Survey 123	Crisis Track	
Initial Damage Assessment	√	√
Situational Awareness	√	√
Track Time		√
Easy Setup		√
Auto Complete Forms		√
Organization Licensing		√
Support		√

# Next Week's Training



## **Build Change: Equity and Disaster Resistant Homes September 23 at 1:30 pm**

Register at

[https://us02web.zoom.us/webinar/register/WN\\_28xAkLXASICvgP7v3oVJzQ](https://us02web.zoom.us/webinar/register/WN_28xAkLXASICvgP7v3oVJzQ)

# **Technical Assistance is Available**

Available Daily: **1 (800) 677-4548**

## **Options for Further Assistance Include:**

Phone and Email consultation

Site Visits

**Register at [www.flhousing.org](http://www.flhousing.org) for:**

Webinars and Other Events

# Thank You!



Gladys Cook  
[cook@flhousing.org](mailto:cook@flhousing.org)

Dayna Lazarus  
[lazarus@flhousing.org](mailto:lazarus@flhousing.org)

Michael Chaney  
[chaney@flhousing.org](mailto:chaney@flhousing.org)