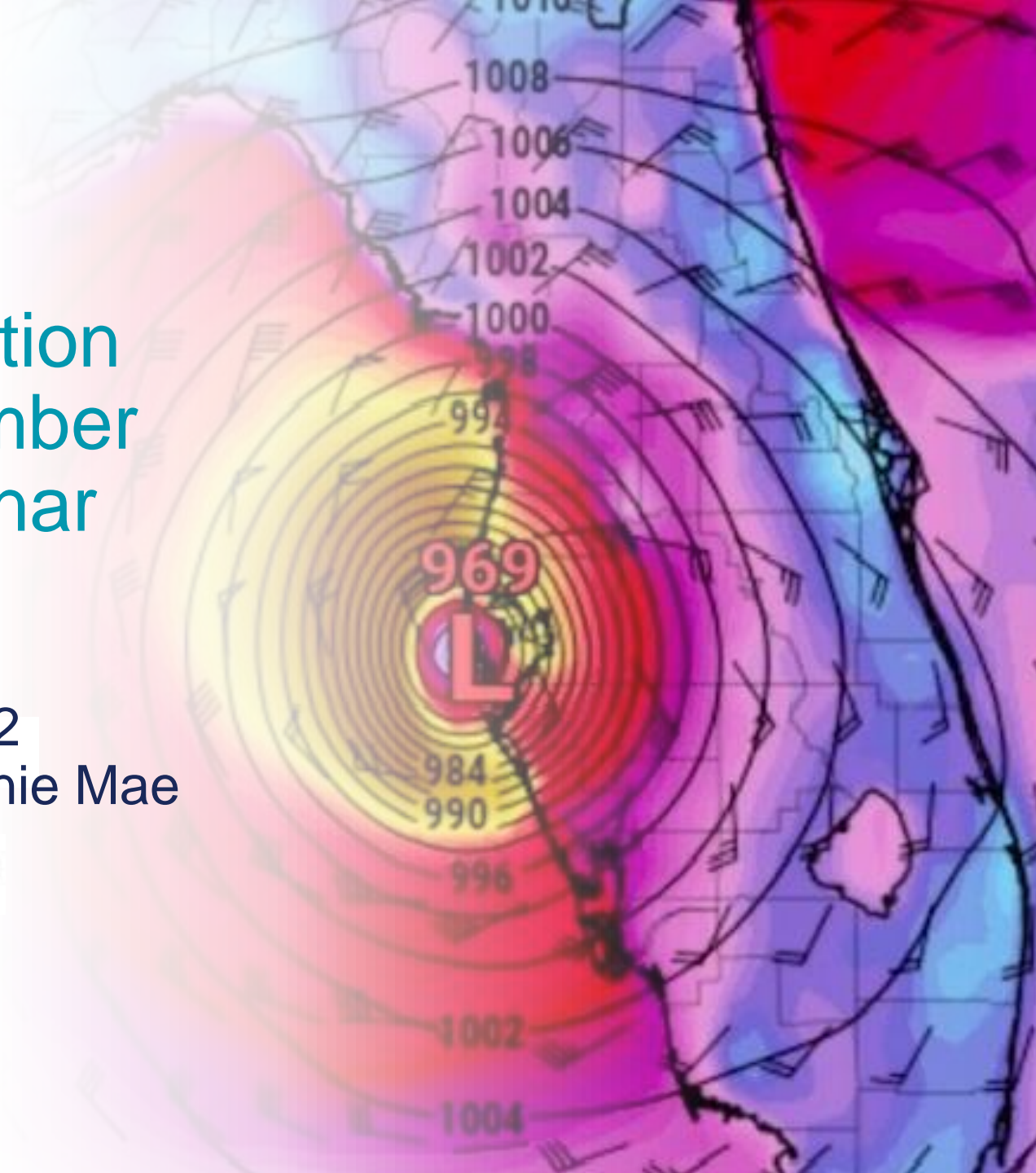


Florida Housing Coalition Hurricane Member Update Webinar

November 18, 2022
Sponsored by Fannie Mae



AGENDA

- Hurricane Ian Response
- Announcements
- Domes for Humanity



Fannie Mae®

THE FLORIDA HOUSING COALITION



Update on Florida Disaster Housing Task Force

Next Meeting:
December 8th at 3:00 pm

Contact Dayna Lazarus for an invite
lazarus@flhousing.org



Fannie Mae®

THE FLORIDA HOUSING COALITION





Hurricane Ian SHIP Response

Webinar Recording at
<https://vimeo.com/760412373>

Governor Announces Deductible Assistance

SHIP Disaster Recovery (SHIP-DR) distributions:

• Charlotte County	\$513,084
• Punta Gorda	\$58,916
• Collier County	\$317,932
• Naples	\$16,768
• DeSoto County	\$250,000
• Hardee County	\$250,000
• Lee County	\$1,990,648
• Cape Coral	\$819,941
• Ft. Myers	\$372,411
• Sarasota County	\$358,848

For Immediate Release: October 22, 2022

Contact: Governor's Press Office,

Governor Ron DeSantis Announces Support for Ian-Impacted Homeowners Insurance Deductibles

Funding will Close the Financial Gap to Recovery for Families, Seniors

FORT MYERS, Fla. — Today, Governor Ron DeSantis announced that Florida Housing Finance Corporation (Florida Housing) is awarding \$5 million to local housing partners to help Floridians impacted by Hurricane Ian pay their home insurance deductibles in the six hardest hit counties. Funding assistance is available to individuals, families, and seniors living in Charlotte, Collier, DeSoto, Hardee, Lee, and Sarasota counties who apply and qualify through Florida Housing's local housing partners. Homeowners are encouraged to contact their local SHIP office directly for more information: [Local Government Information \(floridahousing.org\)](https://www.floridahousing.org).

THE FLORIDA HOUSING COALITION



SHIP Disaster Assistance

- Home Rehabilitation
- Temporary Rental Assistance
- Demolition and Reconstruction
- Purchase Assistance

Hurricane Michael Update

- Bay County received \$37 million of Hurricane Housing Recovery Program (HHRP) funds
- 78% is expended or encumbered for repair, rental assistance, replacement housing, and purchase assistance

THE FLORIDA HOUSING COALITION



And Now...

The Posting of the PowerPoint

- PowerPoint is available in Chat



Webinars made
possible thanks to
the Catalyst Program

November 30
2:00 - 3:30pm

PRESENTED BY



MICHAEL CHANEY



GLADYS COOK



SHIP
housing a stronger Florida

**THE ROLE OF
SHIP
in Housing
Resilience
Strategic
Planning**

<https://register.gotowebinar.com/register/7439008026112840207>



Fannie Mae®

THE FLORIDA HOUSING COALITION



Webinars made
possible thanks to
the Catalyst Program

December 6
2:00 - 3:30pm

PRESENTED BY



MICHAEL CHANEY



TAMARA WEST

LHAP

Design Part I:

This webinar will assist
local government staff
in the preparation and
implementation of the
Local Housing Assistance
Plan (LHAP) as required
by SHIP.

<https://attendee.gotowebinar.com/register/2279808098006524428>



Fannie Mae®

THE FLORIDA HOUSING COALITION



Domes for Humanity



Daniella Gruenthal
Founder and Executive Director
Domes for Humanity
daniella@domesforhumanity.org



- BUILDING STRENGTH TO LAST A LIFETIME -



www.domesforhumanity.org



OUR MISSION

**“ Domes for Humanity
unifies people and communities
to build disaster-resistant
homes and shelters, leaving a
sustainable impact on lives ”**



VS

Let's understand the
benefits of building
with a **DOME** vs
traditional 'box-shaped'
infrastructure.



Design Can Either Hurt or Heal

“An ounce of prevention is worth a pound of cure.” ~ Benjamin Franklin



Urgency for Climate-Adaptive Solutions

- According to the UN Environment Programme, communities can mitigate climate change damage by building round-shaped houses and consider optimum aerodynamic orientation to reduce the strength of the winds.
- Nature-led approach

CONCRETE

Applied by hand or with shotcrete pump. Allow time to dry and remove Airform from interior to reuse.

AIRFORM

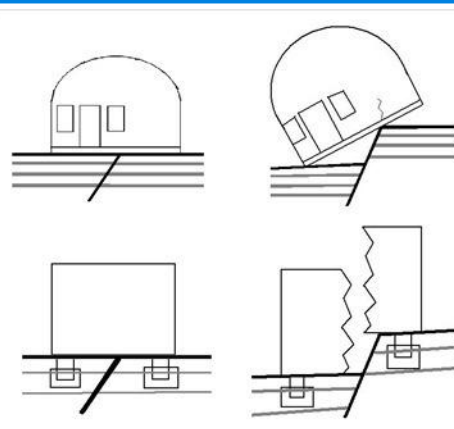
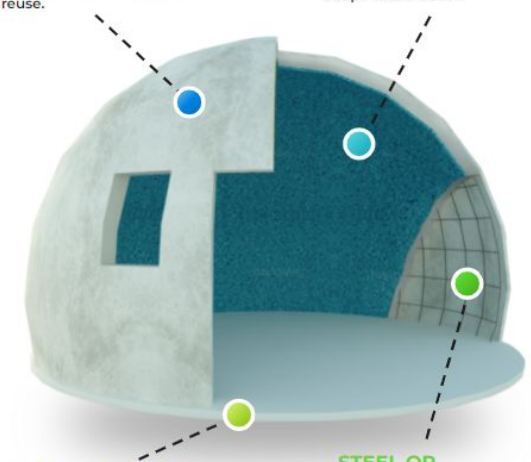
Airform attaches to footing and inflated to form the shape of the dome.

RING BEAM FOOTING

Formed with rebar cross pattern with concrete poured on top.

STEEL OR BASALT REBAR

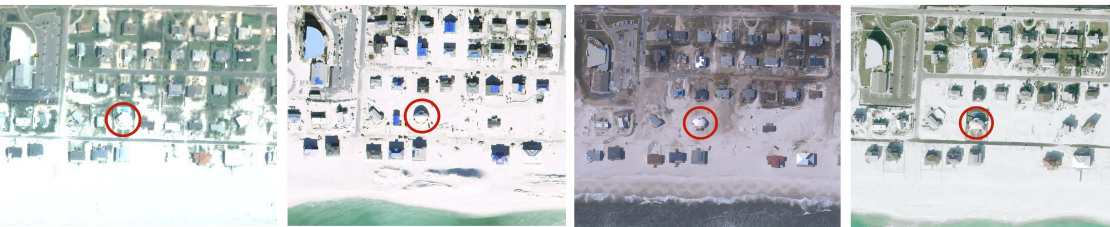
An exterior rebar cage is embedded between concrete.



Urgency for Climate Adaptive Solutions

Imagine never having to rebuild a home or shelter over and over again after a natural disaster!

- **Protect your investment:** Monolithic Dome homes and shelters are proven to resist hurricane winds up to 400 mph, EF-5 tornadoes, 8.0 earthquakes, flooding, fire, rot, termites, and most man-made disasters.
- FEMA P-361 rated for tornado shelter, energy efficient, R-value 80-100, not restricted to climate or site location.



BEFORE HURRICANES (26 AUG 2003)

AFTER HURRICANE IVAN (30 DEC 2004)

AFTER HURRICANE DENNIS (19 JUL 2005)

AFTER HURRICANES (29 APR 2007)



BEFORE HURRICANES (26 AUG 2003)

The only virtually unharmed structure left standing!



AFTER HURRICANE DENNIS (19 JUL 2005)



AFTER HURRICANE IVAN (30 DEC 2004)



AFTER HURRICANES (29 APR 2007)



Lack of Affordable Housing: Homelessness in America

- Emergency shelter, safe haven, and transitional housing
- At \$150-\$200/per week, we can get individuals and families out of tents and off the streets and into permanent housing

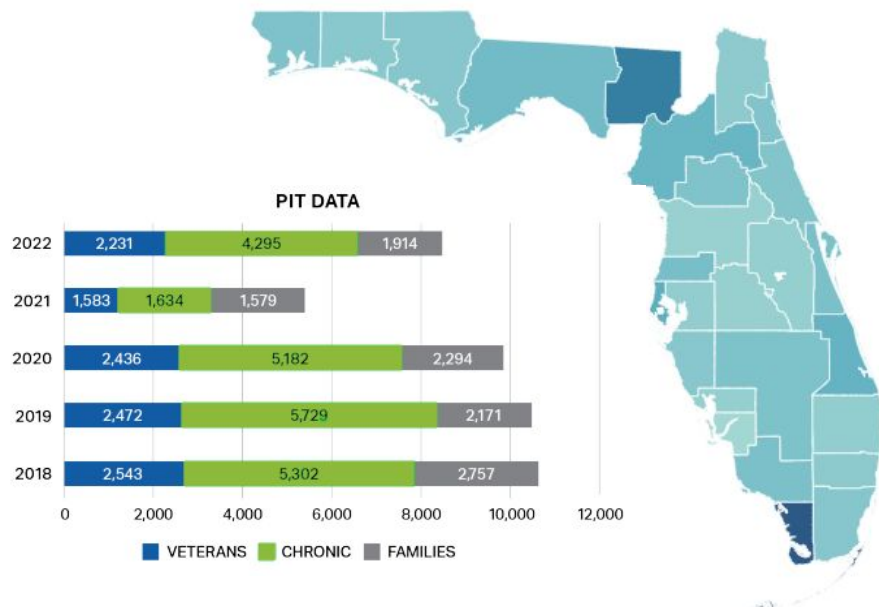
Florida

25,810

People Homeless on a Given Night in 2022

12.8

Homeless Per 10,000 People in the General Population

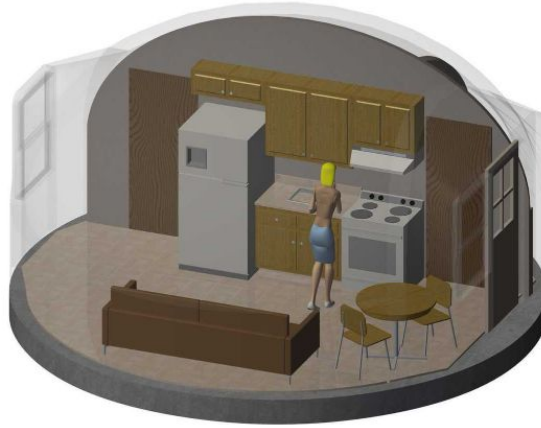
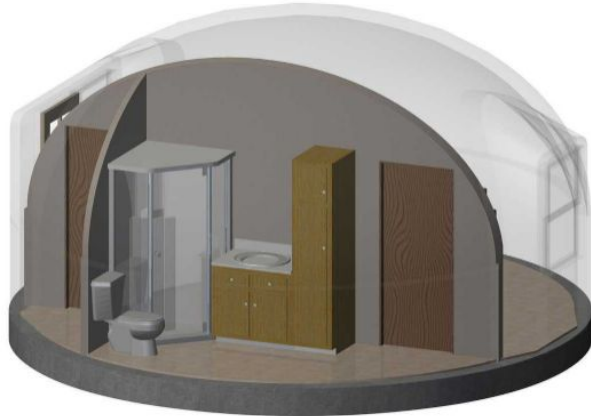


Lack of Affordable Housing: Homelessness in America

The current report draws from the nationwide Point-in-Time Count that occurred in 2022. Typically, Continuums of Care (CoCs) conduct a PIT Count of both sheltered and unsheltered households. In 2021 due to COVID-19 safety concerns, many CoCs did not conduct an unsheltered PIT count, reporting zero unsheltered persons, resulting in an undercount of homelessness.

Affordable Housing

- 48-unit, 20' diameter (314 sf) studio rental community ideal for low-income housing, migrant housing, workforce housing, veteran housing, domestic violence shelter homes, among many.
- Low maintenance, one or two-person unit rents for \$150/week, including utilities & internet.



Case Study - Texas Dome Rentals

Aftershock Aftermath



- Shipping containers picked up and thrown.
- Corrugated steel wrapped around trees
- Trees ripped apart
- Little to no news coverage after two weeks

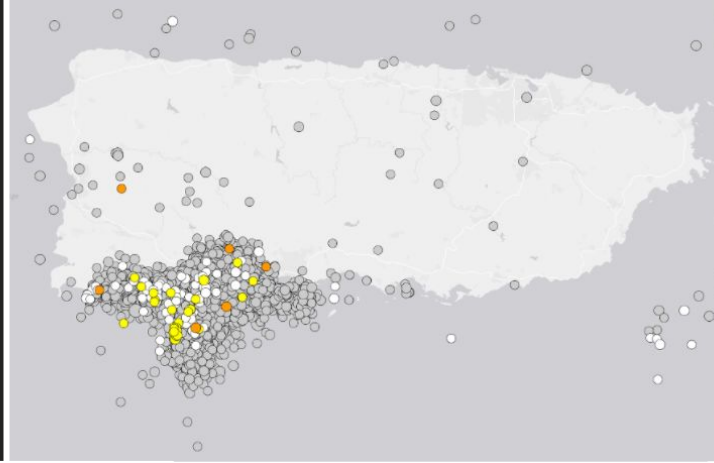
Dorian 2019 - Cat 5 hurricane

- 220 mph winds
- 23 ft storm surge
- Over 200 lives lost
- 76,000 left homeless



Puerto Rico Earthquakes 2020

More than 9,000 earthquakes since December 2019, due to Punta Montalva Fault on the Southwest coast of Puerto Rico (reported by USGS). Lengthy time in power loss. More than 600 buildings were damaged.



Haiti Earthquakes 2018 / 2021



• A home is more than a house ~ it's where your story begins •

Hurricane Ian 2022





Urgency for Climate Adaptive Solutions

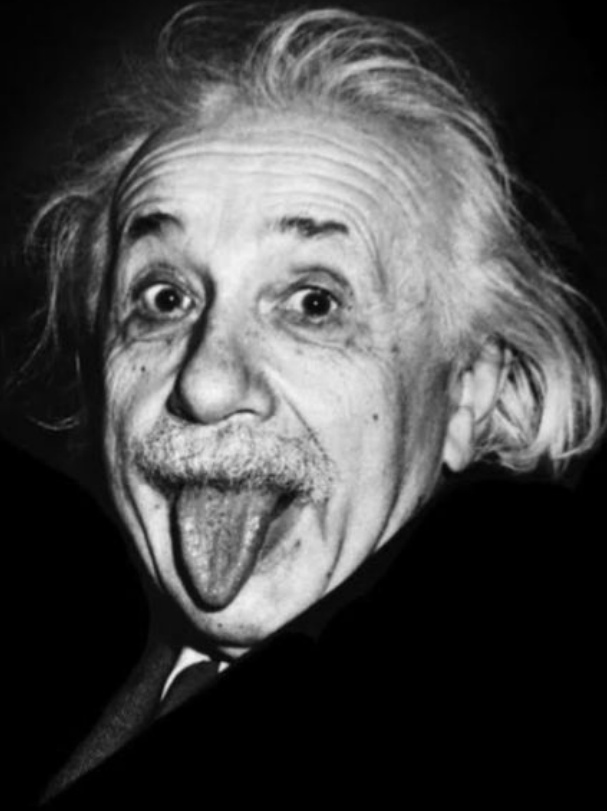


Building smarter means reducing the effects of :

- Short and long-term counseling and mental health intervention for children and adults.
- Cost of clean-up, debris removal and waste management
- Provision of power and water
- Rebuilding and reconstruction
- Loss in ongoing tourism support
- Loss of jobs
- Loss of lives
- Forced child labor
- Chaos in unprepared communities

Urgency for Climate Adaptive Solutions

**INSANITY: DOING THE
SAME THING OVER
AND OVER AGAIN,
AND EXPECTING
DIFFERENT RESULTS.**



**So why don't
we rethink
failed
infrastructure
to prevent
repetitive loss?**



Scale-Up: The Last One Standing

- We aim to continue someone's story for generations to come through evidence-based design.
- *Power of community pulling together is amplified when unified.*

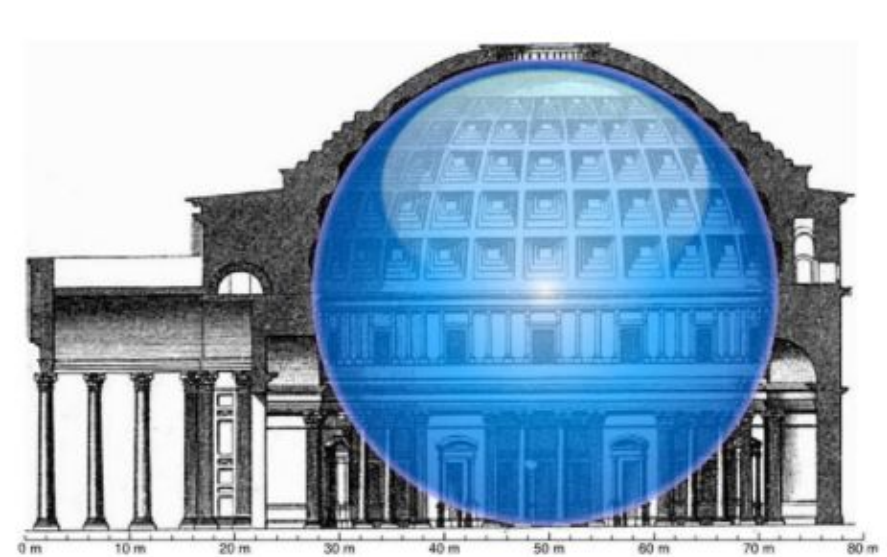


The need to go Beyond Shelter worldwide:

- Empower communities through education and building: “teach one, build one” in underdeveloped countries



Lafayette University Dormitories



Scale-Up: The Last One Standing



The need to go Beyond Shelter worldwide:

- Build human dignity
- Create jobs
- Provide small-scale water relief
- Keep families together
- Increase in purchasing local materials
- Decrease in emergency aid and disaster-relief funding
- True long-term sustainability

FUN FACT : The Pantheon is the oldest known dome still standing today!



- THINK OUTSIDE THE BOX -



www.domesforhumanity.org

No Webinar Next Friday, Thanksgiving Break

Update on Hurricane Ian Insurance Topics



December 2 at 1:30 pm

Register at

https://us02web.zoom.us/webinar/register/WN_RtjQEpSJTEuXHlmgSZmFUg



Fannie Mae®

THE FLORIDA HOUSING COALITION



Technical Assistance is Available

Available Daily: **1 (800) 677-4548**

Options for Further Assistance Include:

Phone and Email consultation

Site Visits

Register at www.flhousing.org for:

Webinars and Other Events



Thank You!

Gladys Cook
cook@flhousing.org

Dayna Lazarus
lazarus@flhousing.org

Michael Chaney
chaney@flhousing.org



TOGETHER

